



# Safety is imperative. Our products ensure it.

We are the specialists in world wide e-mail communication on-board, yacht electronics and on-board LED light solutions.



[www.lunatronix.net](http://www.lunatronix.net)

## Your needs - Our services.

Does your on board e-mail and weather forecast have to cost you the world? Whether you are on the open seas, at a remote anchorage or even somewhere like here on Chagos in the middle of the Indian Ocean, with Lunatronix you have a worldwide solutions partner. We enable you to send and receive your e-mails, keep in touch with your family, friends, your business etc. or receive the latest weather data through GRIB files, weather fax, as well as upload the latest reports on your home page. You can even order spares and supplies to be delivered to your next marina Stop. All of this at low costs.

## Keep in touch.



**2.999,-€** Only incl. EU VAT plus shipping

**2.520,-€** Nett outside Europe plus international shipping

ICOM 718, SSB Short Wave Transceiver with AT-130 Automatic Antenna Tuner, SCS PTC-PACTOR 4 Modem. Complete Modem Cable Set incl. Installation Support & Hotline via phone.

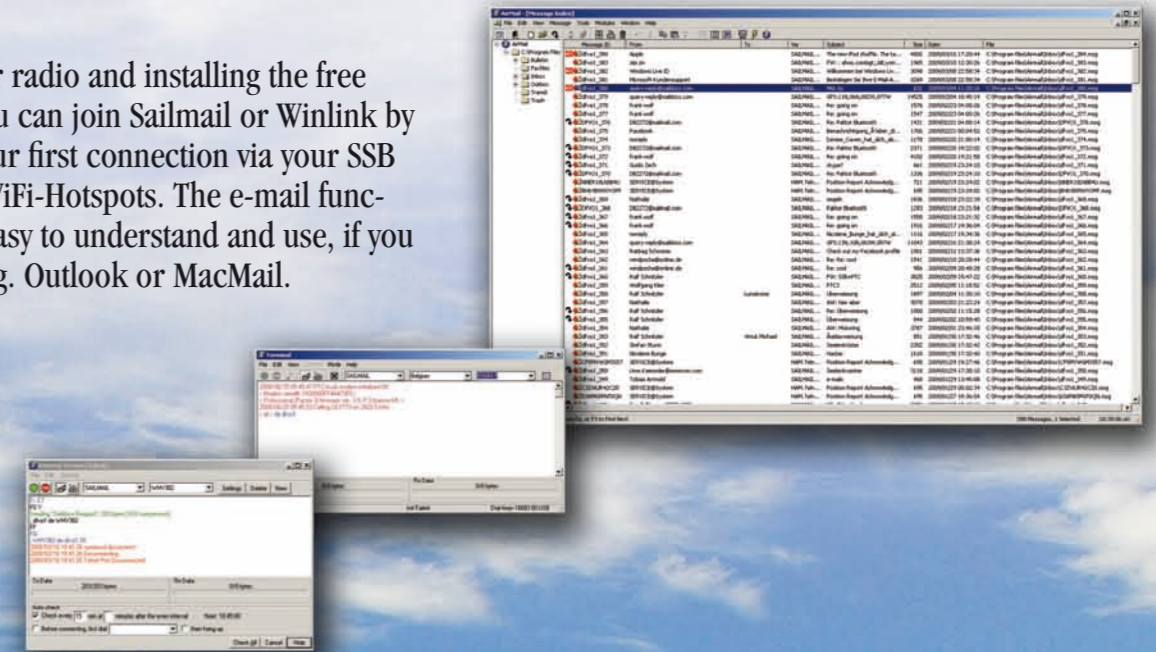
We also offer you all installation materials, like Dyna-Plates, Coax- and Antenna Control Cable and Antennas.

Nowadays it can be called standard to have e-mail on board on ocean going yachts. In addition to the more costly satellite based systems, a group of German electronic enthusiasts have established the PACTOR system. PACTOR is the name of the data transfer protocol made by SCS, but is often used as a description for the complete solution. All you need is e.g. an ICOM transceiver with antenna tuner, a SCS PACTOR 4 modem and a PC or laptop on board. The Airmail software will send and receive e-mails over great distances, up to 2000 miles, of which the dial up stations are from a world-wide network. The e-mail system also enables you to receive weather data for your cruising grounds and is easy to install, safe and reliable. Thousands of cruisers world wide can tell you about it. Around 80 percent of all cruising yachts are equipped with SSB and PACTOR.

**Big benefit. Low cost.**

## Your E-Mail.

After setting up your radio and installing the free Software Airmail you can join Sailmail or Winlink by instantly making your first connection via your SSB Radio, Iridium or WiFi-Hotspots. The e-mail functions of Airmail is easy to understand and use, if you know how to use e.g. Outlook or MacMail.



Modern notebooks always require 15-22 DC Volt power, which makes it necessary for an inverter. This costs you extra energy and may cause interferences when using a PACTOR. Therefore we offer the LunaPC with 12 Volt DC power supply. It is as small as a car radio and fan less. Therefore it will not let salty air into the housing, solving the problems which are so often experienced with note books on board. We also provide LCD screens, which can be made waterproof to IP65 standard. The combination of a LunaPC installed behind a panel and a built-in LCD screen is also less easy to steal, than a notebook. The LunaPC draws only 1.5 Amps at 12 Volt, which means it can just remain on so to track your course when you're going through difficult places.



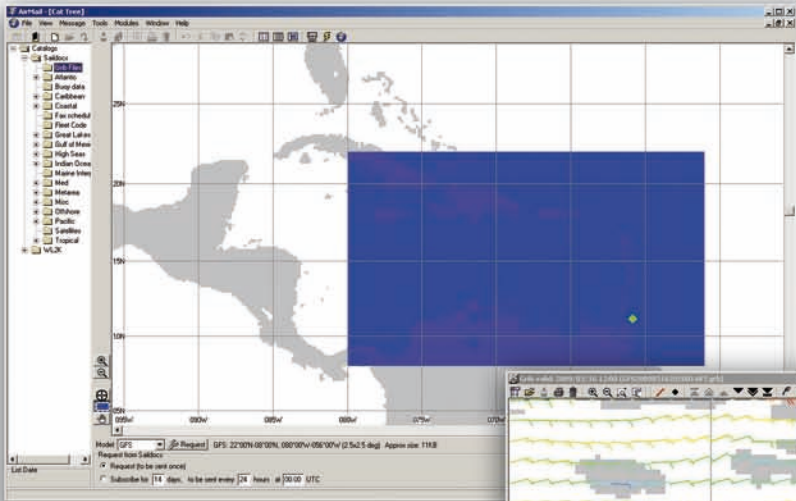
We offer whole range of products of SCS, ICOM and RAYMARINE products as well as a fine assortment of other useful electronic gadgets and equipment. Please visit our homepage at [www.lunatronix.net](http://www.lunatronix.net) or e-mail your wishes to [info@lunatronix.net](mailto:info@lunatronix.net). We are able to integrate the Pactor modem into many ICOM transceivers. Less cables and wireless communication between the modem and the PC are only two of many other benefits.



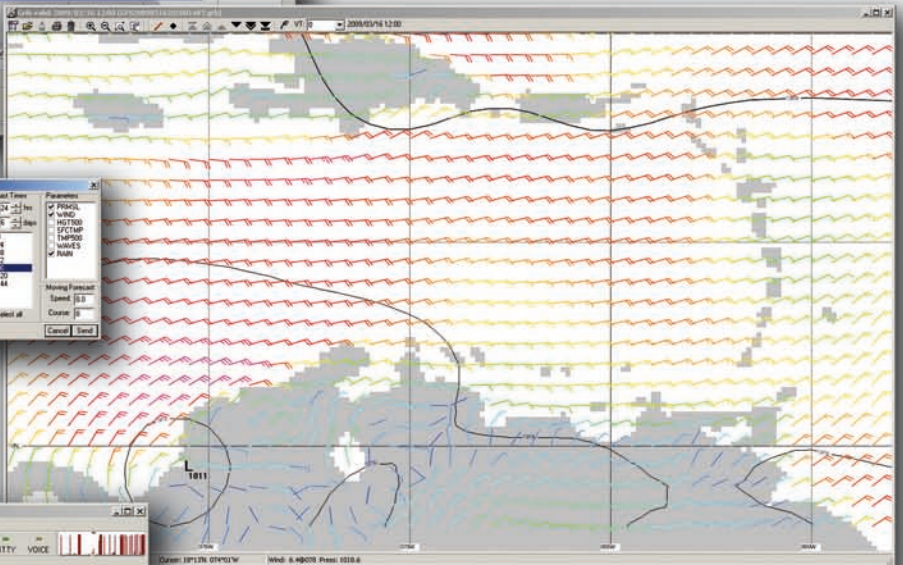
# Your Weather and More.

On a sailing boat, the weather is most important.

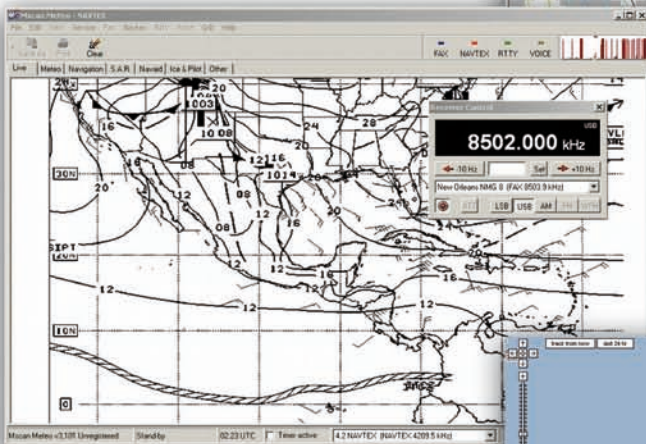
The GRIB requesting weather and wind of Airmail is easy to use. Simply select the area, which you would like the weather forecast for the up coming days for, by dragging the section you are interested in. Now you can send your request. To simplify things even more, you can subscribe for an automatic daily GRIB file, for a specific time period. This enables you to receive your weather GRIB File and forecast for each day of the given time you have selected.



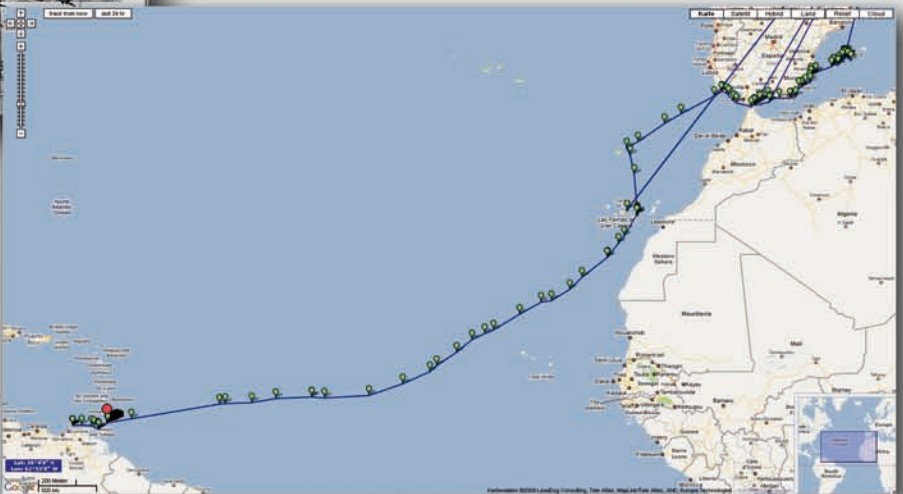
To see weather fronts, storms and get meteorologist weather charts, you need Weather FAX. We recommend MSCAN Meteo for receiving this. The WFX is received by broadcast stations at specific times. MSCAN is able to change the radio frequencies according to your schedule and give the best quality of charts.



The SSB allows you to exchange important information with the marine nets, friends, family and folks on other boats. You stay in contact with all the sailing community, just for fun and even in distress. You are also able to send your position to your web site, family and friends at home. It is the ideal means of communication on long term sailing trips.



When your GPS is connected to the modem or PC, you can enable Airmail to send out tracking position reports with each connection. Therefore your family, friends, etc. can check where you are on the Internet. Many cruisers update their web sites with Airmail and show their own Google Maps with their position in it.



**Head Office:**  
LUNATRONIC Germany  
Michael Wnuk  
Kempgensweg 81  
D-40231 Duesseldorf  
GERMANY

Office: +49 (0)211 99545974  
FAX: +49 (0)211 24811441  
e-mail: info@lunatronic.net



www.lunatronic.net

LUNATRONIC Sweden  
Nuno Antunes  
Söderåsv.1  
S-26023 Kågeröd  
SWEDEN  
Office: +46 705 249085

LUNATRONIC Italy & France  
Horace Costa  
Via Procaccini 44  
20154 Milano  
ITALY  
Office: +39 34 71 299 372